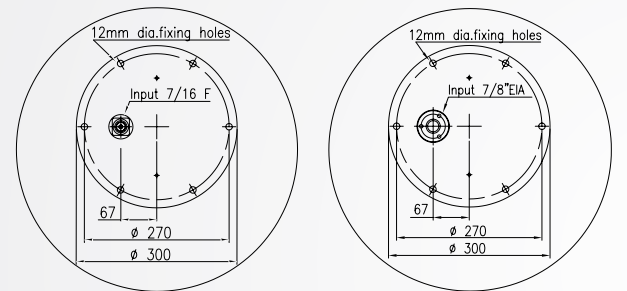


UTV-11/ LP

UHF SUPERTURNSTILE ANTENNA

FeAt u Res

- horizontal polarization
- broadband 470 ÷ 860 MHz
- omnidirectional pattern
- self supporting radome



base referred to UTV-11/ 1/ LP and UTV-11/ 2/ LP base referred to UTV- 11/4/ LP and UTV-11/ 2/ LP

ELECTRICAL DATA

ANTENNA TYPE	UTV-11/ 1/ LP	UTV-11/ 2/ LP	UTV-11/ 4/ LP
FREQUENCY RANGE	470 ÷ 860 MHz	470 ÷ 860 MHz	470 ÷ 860 MHz
IMPEDANCE	50 ohm	50 ohm	50 ohm
CONNECTOR	7/ 16 F	7/ 16 F	7/ 8" EIA
MAX POWER	1 kW	1.4 kW	2 kW
VSWR	≤ 1.15 (≤11470÷790MHz)	≤ 1.1	≤ 1.1
POLARIZATION	Horizontal	Horizontal	Horizontal
GAIN (referred to half wave dipole)	5 dB	8 dB	11dB
LIGHTNING PROTECTION	All metal parts DCgrounded		

MECHANICAL DATA

DIAMETER	300 mm	300 mm	300 mm
ANTENNA HEIGHT "L"	1214 mm	2438 mm	4868 mm
WEIGHT	18 kg	31kg	58 kg
WIND SURFACE	0.28 m ²	0.56 m ²	1.12 m ²
WIND LOAD (wind speed at 150 km/ h)	0.22 kN	0.45 kN	0.9 kN
MAX WIND VELOCITY	220 km/ h		
MATERIALS	Brass, aluminium, tef on, f berglass (radome)		
ICING PROTECTION	Full radome		
RADOME COLOUR	Grey		
MOUNTING	Directly on top of existing mast by means of a f ange		

RADIATION PATTERNS (Mid Band)

